

● Flex-Seal Products

● Standard Couplings (100-620mm diameter)

Drain and Sewer Pipe Connection and Repair - Designed for sewerage, drainage and low pressure applications up to 1 bar

Introduction

Flex-Seal provide the most extensive range of Standard Couplings available in the marketplace and have revolutionised traditional pipe repair methods over the years.

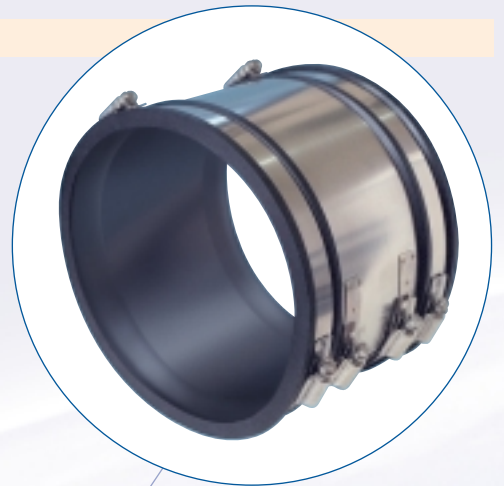
Flex-Seal Standard Couplings are specifically designed to connect and repair pipelines of different materials or sizes used in sewerage, drainage and other underground applications.

When excavation work is required to repair a damaged pipe, Flex-Seal Standard Couplings will reduce the amount of time required and minor differences in pipe diameter can be accommodated. Larger diameter differences are installed using a suitably sized bush.

The combination of a durable design and excellent sealing properties enables the Flex-Seal Standard Coupling to provide a reliable seal on rough pipe surfaces e.g. concrete, and a high performance seal on smooth surfaces e.g. PVCu.

Standard Couplings can be combined with Flex-Seal Bushes in order to act as an adaptor between pipelines of widely differing outside diameters. A Bush will be required by the contractor when connecting pipes of different materials or sizes i.e. when outside diameters of the joints exceeds 12mm.

Flex-Seal can also supply Standard Couplings with nitrile sleeves (See sheet 31).



Benefits

- **Durable design ensuring a high performance and reliable seal**
- **Stainless steel shear band provides excellent resistance to heavy loads and shear forces**
- **Reduces excavation work**
- **Complies with WIS 4-41-01 (all public sewers and sewers for adoption)**
- **Shear band ensures joint flexibility and pipe alignment**
- **High performance sealing properties of the couplings eliminates need for grouting in most applications**



Applications

When used individually or combined with bushes, Flex-Seal Standard Couplings have many applications in the construction, repair and maintenance of pipe systems:

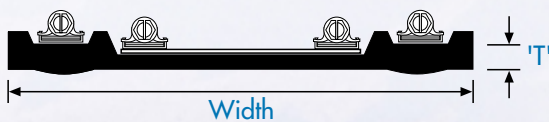
- As a joint for plain ended pipes
- Repair and maintenance of existing pipelines
- Connecting short and cut lengths of pipe
- Making post construction connections to an existing pipeline
- Reconnection of laterals on renovated sewers
- Introducing rocker pipe outside manholes or structures

Product Information

Reference No.	Size (mm)	Width (mm)	T' (mm)
SC115	100 - 115	100	7
SC120	110 - 121	120	7
SC125	110 - 125	120	7
SC137	120 - 137	120	7
SC150	125 - 150	120	7
SC165	140 - 165	120	7
SC175	150 - 175	120	7
SC180	160 - 182	120	7
SC200	175 - 200	150	7.5
SC215	190 - 215	150	7.5
SC225	200 - 225	150	7.5
SC250	225 - 250	150	7.5
SC265	240 - 265	150	7.5
SC275	250 - 275	150	7.5
SC290	265 - 290	150	7.5
SC310	285 - 310	185	9
SC320	295 - 320	185	9
SC335	305 - 335	185	9
SC345	315 - 345	185	9
SC360	340 - 360	185	9
SC385	355 - 385	185	9
SC410	385 - 410	185	9
SC425	400 - 425	185	9
SC430	405 - 430	185	9
SC445	420 - 445	185	9
SC465	435 - 465	185	9
SC490	465 - 490	185	9
SC510	480 - 510	185	9
SC525	495 - 525	185	9
SC540	510 - 540	185	9
SC550	520 - 550	185	9
SC560	530 - 560	185	9
SC580	555 - 580	185	9
SC600	570 - 600	185	9
SC620	590 - 620	185	9

Also available with nitrile sleeves

Cross Section of Coupling



Application

SC120	110mm	PVCu
	100mm	CAST IRON (BS416)
	100mm	STAINLESS STEEL
	100mm	CAST IRON (BS437)
	100mm	DUCTILE IRON
	100mm	SUPERSELE (see also SC137)
SC137	100mm	(4") SALT GLAZED WARE
	100mm	VITRIFIED CLAY
	100mm	SUPERSELE
	100mm	PITCH FIBRE
	100mm	ASBESTOS CEMENT
SC165	160mm	PVCu
	150mm	CAST IRON (SMU/ENSIGN/SML)
	150mm	STAINLESS STEEL
	160mm	POLYETHYLENE
SC175	160mm	PVCu
	150mm	DUCTILE IRON
	150mm	CAST IRON (BS416)
	150mm	CAST IRON (BS437)
	150mm	STAINLESS STEEL
	150mm	ULTRA-RIB QUANTUM
SC200	150mm	(6") SALT GLAZED WARE
	150mm	VITRIFIED CLAY
	150mm	SUPERSELE
	150mm	CONCRETE
	150mm	ASBESTOS CEMENT
	150mm	PITCH FIBRE
	180mm	ULTRA-RIB
	200mm	PVCu
SC225	200mm	DUCTILE IRON
	200mm	CAST IRON (BS416)
SC250	175mm	PITCH FIBRE
	200mm	VITRIFIED CLAY
	200mm	ASBESTOS CEMENT
	225mm	ULTRA-RIB QUANTUM
	250mm	PVCu
SC265	225mm	ASBESTOS CEMENT
	225mm	DUCTILE IRON
	250mm	CAST IRON
SC275	250mm	DUCTILE IRON
	250mm	CAST IRON
SC290	225mm	(9") SALT GLAZED WARE
	225mm	VITRIFIED CLAY
	225mm	CONCRETE (O.D. Up to 290mm)
	250mm	ASBESTOS CEMENT
	250mm	DUCTILE IRON
SC310	225mm	CONCRETE (O.D. Over 290mm)
SC320	315mm	PVCu
SC335	300mm	DUCTILE IRON
	300mm	CAST IRON
SC345	300mm	ASBESTOS CEMENT
	300mm	ULTRA-RIB QUANTUM
	300mm	DUCTILE IRON
	300mm	DUCTILE IRON
SC385	300mm	(12") SALT GLAZED WARE
	300mm	VITRIFIED CLAY
	300mm	CONCRETE (O.D. Up to 385mm)
SC410	300mm	CONCRETE (O.D. Over 385mm)
	400mm	PVCu
SC425	300mm	CONCRETE (O.D. Over 405mm)
SC430	400mm	DUCTILE IRON
	375mm	ASBESTOS CEMENT
SC445	375mm	ASBESTOS CEMENT
	400mm	DUCTILE IRON
	400mm	CAST IRON
SC465	375mm	(1.5") SALT GLAZED WARE
	375mm	VITRIFIED CLAY
	375mm	CONCRETE (O.D. Up to 465mm)
	400mm	ASBESTOS CEMENT
	450mm	PVCu
SC490	375mm	CONCRETE (O.D. Over 456mm Up to 490mm)
	450mm	DUCTILE IRON
	450mm	ASBESTOS CEMENT
SC510	375mm	CONCRETE (O.D. Over 490mm Up to 510mm)
	400mm	VITRIFIED CLAY
SC525	375mm	CONCRETE (O.D. Over 510mm Up to 525mm)
SC560	450mm	(18") SALT GLAZED WARE
	450mm	VITRIFIED CLAY
	450mm	CONCRETE (O.D. Up to 560mm)
	500mm	ASBESTOS CEMENT
SC580	450mm	CONCRETE (O.D. Over 555mm Up to 580mm)
SC600	450mm	CONCRETE (O.D. Over 580mm Up to 600mm)



Global Solutions for Pipe Connection and Repair

Endeavour Works, Newlands Way, Valley Park, Wombwell, Barnsley S73 0UW, England

General Tel: +44 (0) 1226 340 222 Fax: +44 (0) 1226 340 999

E-mail: sales@flexseal.co.uk Web Site: www.flexseal.co.uk